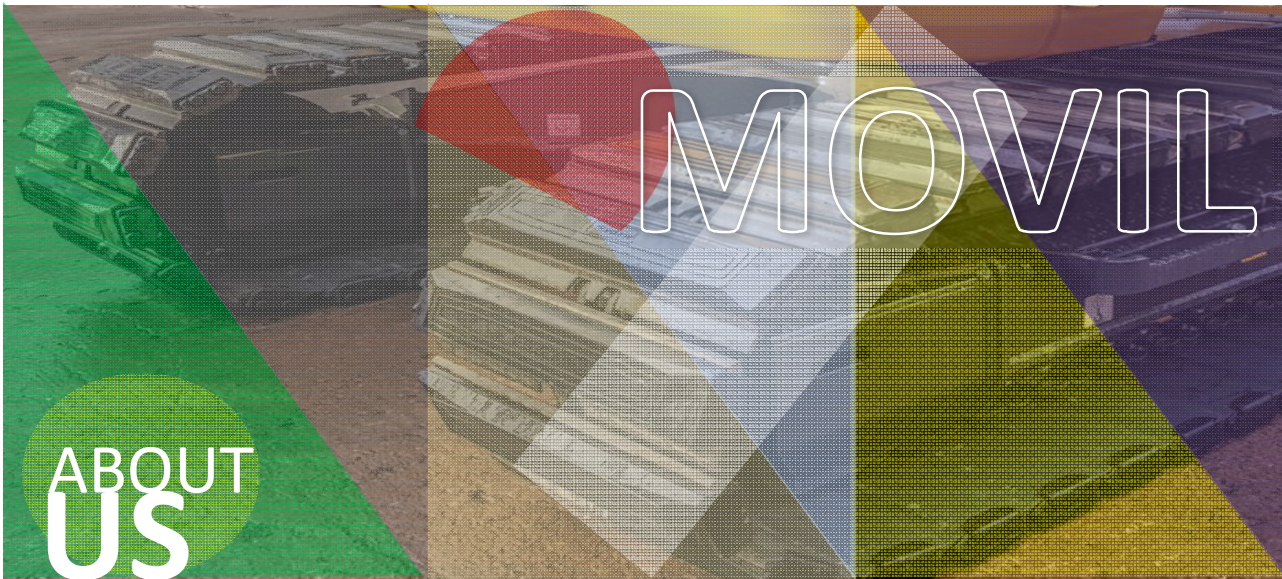




# MOVIL RUBTECH INDIA LLP

AN ISO 9001 : 2015 COMPANY



## COMPANY PROFILE

**MOVIL RUBTECH INDIA LLP.** HAVING A STATE-OF-THE ART MANUFACTURING FACILITY IN AHMEDABAD, GUJARAT. WELL-EQUIPPED WITH ALL THE NECESSARY MACHINES AND TESTING EQUIPMENT, WE ADHERE TO STRICT QUALITY STANDARDS IN THE MANUFACTURING PROCESSES.

**MOVIL RUBTECH INDIA LLP.** IS EXPERTISE IS RUBBER TO METAL BONDING PRODUCTS. WHICH INCLUDES **TRACK PAD, ANTI VIBRATION MOUNT, CRUSHER MOUNT, PILING MOUNT, PAVER TYRE ETC.** OUR PRODUCTS ARE MANUFACTURED FROM BEST QUALITY NATURAL RUBBER OR PU RUBBERS. CARE IS TAKEN TO GET AN EXCELLENT PRODUCT LINE BY TESTING EACH PRODUCT IN OUR WELL EQUIPPED TESTING LABORATORIES. IMPLEMENTATION OF ADEQUATE SAFETY MEASURES TO PREVENT HAZARDS AT THE MANUFACTURING SITE ALONG WITH OPTIMUM UTILIZATION OF RESOURCES, BE IT MANPOWER OR MATERIALS OR FINANACES ENSURE AUGMENTATION OF PRODUCTION.

SINCE INSPECTION, THE SUCCESS OF **MOVIL RUBTECH INDIA LLP.** HAS ALWAYS REVOLVED AROUND CONSTANT UPGRADATION OF TECHNOLOGY, REGULAR TRAINING OF EMPLOYEES AND THE MANUFACTURE OF QUALITY PRODUCTS. AS MANUFACTURER AND EXPORTER, WE HAVE INTRODUCED A HIGHLY SKILLED MANPOWER TO MANUFACTURE OUR PRODUCT RANG.

## INDUSTRIES WE SERVE

- ▶ ROAD CONSTRUCTION INDUSTRIES
- ▶ EARTH MOVING INDUSTRIES
- ▶ GENERATOR SET INDUSTRIES
- ▶ PLASTIC INDUSTRIES
- ▶ PUMP INDUSTRIES
- ▶ HYDRAULIC INDUSTRIES
- ▶ ENGINE MOUNTINGS OF VARIOUS TYPE
- ▶ MACHINE TOOLS INDUSTRIES
- ▶ PHARMACEUTICALS INDUSTRIES
- ▶ AIR BLOWER PLANTS
- ▶ MATERIAL HANDLING EQUIPMENTS

## QUALITY POLICY

WE AT OUR COMPANY ARE COMMITTED TO: MEET CUSTOMER REQUIREMENTS & SATISFACTION BY PROVIDING SERVICES ON TIME, EVERY TIME.

MANUFACTURING HIGH QUALITY PRODUCTS THAT FIT-TO-USE AND DURABLE.

ACHIEVE & MAINTAIN HIGH STANDARDS OF QUALITY MANAGEMENT SYSTEM BY EMPLOYEES MOTIVATION. PARTICIPATION & BRING CONTINUAL IMPROVEMENT IN THE SYSTEM.

## TRACK PAD FOR ASPHALT / CONCRETE PAVER & EXCAVATOR

TRACK PAD PROTECT THE SURFACE AND PROVIDE THE TRACTION NEEDED FOR MACHINE AND MORE DURABLE AND LONG LASTING.

1. EXCELLENT SURFACE PROTECTION, AND WON'T DAMAGE THE PAVER ROAD THE WAY BARE STEEL TRACK CAN.
2. STATE-OF-ART TECHNOLOGY ENHANCES TENSILE STRENGTH, AND ENSURE FOLLOWING TRAVELLING.
3. ENDURABLE WORKING HOURS UP TO 4000 HOURS.
4. TRACK PAD HELPS ABSORBING THE VIBRATION DURING MACHINE OPERATION. WHICH EFFECTIVELY PROTECTS THE UNDERCARRIAGE PARTS FROM LOOSENING QUICKLY. IT ALSO PROVIDES BETTER TRACTION FOR CLIMBING UPWARD AND PREVENTING SLIPPERY ON RAINY DAYS OR SLOPE-PARKING
5. **INTERNAL STRUCTURE:** THE TRACK SHOES ARE BEING WELL PROTECTED AND COULD BE REUSED MANY TIMES.
6. **EXTERNAL FEATURE:** MADE WITH EXCLUSIVE CHAMFERS THAT HELP AVOIDING LEAVING SCRATCHES ON THE GROUND, REDUCING THE CHANCES OF RUBBER CHUNKING OFF FROM THE EDGE AND FACILITATING THE TURNING AND MOVING OF THE MACHINE.
7. **OVERALL DESIGN:** RUBBER TRACK PAD PADS CAN BE REPLACED SOLELY WITHOUT REMOVING OR CHANGING TRACK SHOES, WHICH ELIMINATES BOTH TIME AND COST.

**EXCAVATOR TRACK PAD**

<b>TRACK PAD</b>	<b>PAD NO.</b>	<b>SIZE OF TRACK PAD</b>	<b>MACHINE BRAND</b>	<b>MACHINE MODEL NO.</b>
	MVL952517-1	500MM	TATA HITACHI, LIUGONG	ZX 120, 140, 200, EX70
	MVL952536	300MM (200 HOLE CENTER)	TATA HITACHI, KUBOTA BOBCAT, SANY, LIUGONG	TATA HITACHI, KUBOTA 30U, S17-3, BOBCAT E37, E30, SY35U, SY20U, 9027F,
	MVL952537	400MM	APOLLO, DOOSAN BOBCAT, JCB, SANY	DOOSAN BOBCAT, APOLLO 400, 800, SD390
	MVL952547	405MM	MANITOU	MANITOU
	MVL952548	600MM	L&T KOMASTU, SANY	L&T KOMASTU 210, SANY SY 210
	MVL952549	250MM	JCB, SANY	JCB TMX20, SANY SY 26
	MVL952551	800MM	HYUNDAI	HYUNDAI 220
	MVL952557	230MM	APOLLO	KLM1200
	MVL952558	450MM	TATA HITACHI	EX-70
	MVL952560	600MM	VOLVO	VOLVO EC210
	MVL952564	500MM	SANY, HYUNDAI, TATA HITACHI, SDLG	SANY SY 140, HYUNDAI R140, HITACHI Ex 110, SDLG (E6135i)
	MVL952566	450MM	HYUNDAI, KOMATSU, SDLG	HYUNDAI 85A, KOMATSU PC 71, SDLG (E680Fi)
	MVL952567	600MM	VOLVO	VOLVO EC200D
	MVL952569	600MM	TATA HITACHI	HITACHI EX 210 LC SUPER

PAVER TRACK PAD				
TRACK PAD	PAD NO.	SIZE OF TRACK PAD	MACHINE BRAND	MACHINE MODEL NO.
	MVL952501	300MM	VOLVO, BITELLI, TITAN	BITELLI VOLVO DYNAPAC - F181C
	MVL952505	300MM	VOGELE	VOGELE - 1800, 2100, 1400
	MVL952510	300MM	WIRTGEN	SP64, SP500, SP250
	MVL952523	450MM	APOLLO, SANY, LIUGONG	AP 1000, SY60C, 908E
	MVL952526	230MM	APOLLO	KP 1200
	MVL952528	260MM	VOGELE	VOGELE - 1300
	MVL952531	300MM	BITELLI	BB651C, BB670C, BB671C ETC
	MVL952532/1	300MM	VOLVO, SANY	VOLVO - P5320B, SAP100C-10, P7320
	MVL952539	500MM	WIRTGEN	SP 1600
	MVL952540	300MM	WIRTGEN	SP 850
	MVL952541	260MM	WIRTGEN	W200, 195, TCM 1800, 180, 95, 95I
	MVL952555	350MM	WIRTGEN	SP 94

\* TRACK PAD CAN BE MANUFACTURED AS PER CUSTOMERY REQUIREMENT.

## COMPECTOR PAD / VIBRATING ROLLER PAD

MOVIL RUBTECH VIBRATING ROLLER PAD IS AVAILABLE IN VARIOUS SIZES, SHAPE & HARDNESS. MOVIL RUBTECH VIBRATING ROLLER PAD AS EXCELLENT HORIZONTAL & VERTICAL SHOCK RESISTANCE CAPABILITIES TO SUIT A LOAD OF 5000 KGS AND ABOVE PER PAD.

**"MOVIL RUBTECH VIBRATING ROLLER PAD HAS MADE HIS BENCHMARK IN DOMESTIC & INTERNATIONAL MARKET BY ITS SUPERIOR QUALITY & PERFORMANCE".**

### FEATURES

- **RUBBER MATERIAL:** TEAR AND WEAR RESISTANT AND ANTI-AGING FORMULA ENSURE THE BEST PERFORMANCE DURING THE MACHINE OPERATING.

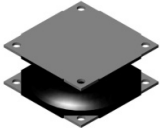
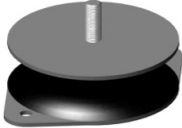
### CUSTOMIZATION





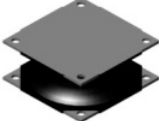

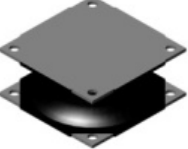

- **FORMING:** RUBBER AND STEEL PLATES ARE PRESSURIZED UNDER HIGH TEMPERATURE VULCANIZATION TO MAKE SURE THE COMPOSITING IS EVENLY STABILIZED FOR THE BEST PERFORMANCE.

### APPLICATION

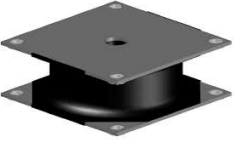
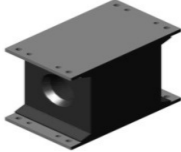
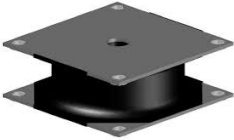
- ROAD ROLLER
- COMPACTOR
- VIBRATORY PILE HAMMER
- BREAKER

### VIBRATING ROLLER PAD

VIBRATING ROLLER PAD	PAD NO.	MACHINE BRAND	MACHINE MODEL	PART NO.
	MVL953001	DYNAPAC	Ch25, CA15, CA30, CA35, Ca4, Ca152, Ca182, Ca250, Ca25, Ca300, Ca302, Cc20, Cc21, Cc30, Cc41, Cc50, Cc142	336742, 450122, 801187
		INGERSOL RAND, VOLVO/ESCORT	Dd24, DD32, Dd65, Dd70, DD90, DD110, Sd0, SD70, SD100, Sd150, SD175	59600205, 59572339, 59639955, 5900696
		CUTTER PILLER	Cp533, Cs533, CB543C, CP563, CAT531	0772092, 0772792
	MVL953002	INGERSOL RAND VOLVO	SD100C, SD100D, DD118, SD110DC	13304187

	MVL953003, MVL953004	ESCORT / HAMM / AMMANN, ACE	HD70-75, Hd85, HD90-110, Av26, DV3, HD 10-13, 2420SD, 2510SD, HD SERIES, ASD115	354082, 324353
	MVL953005	BOMAC / GREAVES	BW4AS-BW6, BW212A, BW212D, BW213, BW217, BW214, BW219	06180114, 06180112
	MVL953006, MVL953007	BOMAG / GREAVES	Bw141, Bw151, Bw161, Bw174, BW90, Bw100, BW120, BW123	06119395, 06119394, 06118715, 06118705, 06118312
	MVL953008	L&T, CASE	L&T 752, L&T 491, L&T 990, 1190D, 405 ETC	
	MVL953012	BITELLI	C-100, C120, DTV 100, 135, 154, 650	160055, 160093, 160100, 160212, 160224, 160225
	MVL953013	CAT	683E, CB334D	1611156, 2270172
	MVL953015	DYNAPAC, KENT, ICE	Ca51, CA551, Ca602, KHP65, 135, 18RF	358172 (4336615- 01), K07221, 130023, 130883
	MVL953020	HAM	Dv40, Dv70, Dv90, 3205, 3307, 3410, 3411, 3520	1487116

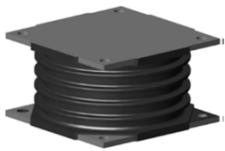
**PILE HAMMER VIBRATOR PAD**

<b>PILE HAMMER VIBRATOR PAD</b>	<b>PAD NO.</b>	<b>MACHINE BRAND</b>	<b>MACHINE MODEL</b>	<b>PART NO.</b>
	MVL951041	ALLIED, CAT, ICE	9700, HD6, 44/416	719749, 100796, 105-8844
	MVL951042	PVE, APE, ICE	105M, 55NF, ICE4416, 420, 423, 815, 817	100003
	MVL951043	ALLIED, KENT, TEMPO, STANDLEY	Hc30, KHP220, RS166A, HS-11000	K12861, 30167, 00126300

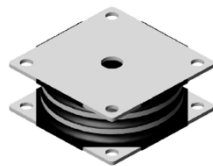
**CRUSHER MOUNT**

**CRUSHER MOUNT FOR CONE CRUSHER, JAW CRUSHER, VIBARTING SCREEN, STONE CRUSHER ETC.**

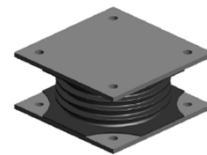
CRUSHER MOUNTS CONSIST OF A RUBBER SECTION VULCANISED TO A METAL PLATE, OR SIMPLY RUBBER MOULDED COMPONENTS. THE PURPOSE OF A SHOCK MOUNT IS TO REDUCE THE LEVEL OF TRANSMITTED SHOCK TO SURROUNDING STURCTURE THROUGH RELATIVELY HIGH DEFLECTIONS IN THE RUBBER. EXAMPLES OF SHOCK MOUNTING APPLICATIONS INCLUDE BUMPERS ON COMMERCIAL VEHICLES, CRANE BUFFERS AND CRUSHER MACHINE APPLICATIONS TO MIL-STD SHOCK SPECIFICATIONS WHERE REQUIRED.



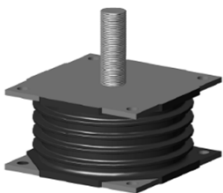
**MVL951032**



**MVL951031**



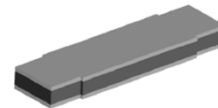
**MVL951033**



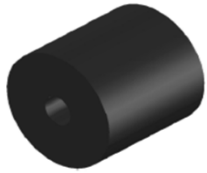
**MVL951032-1**



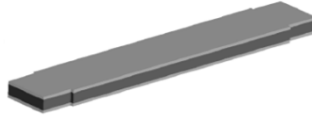
**MVL951035**



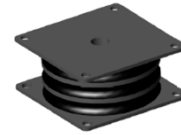
**MVL952043**



**MVL952048**



**MVL952042**



**MVL951038**

### CUSHYFOOT MOUNT

CUSHYFOOT MOUNTS ARE AVAILABLE IN A VARIETY OF SIZE AND STYLES, TO SUIT BOTH HEAVY DUTY MACHINERY AND LIGHTER WEIGHT PRECISION APPLICATIONS. DIFFERENT DESIGNS OF MACHINE FOOT CAN BE OFFERED, EITHER WITH OR WITHOUT REBOUND CONTROL AND WITH A VARIETY OF FITMENT/INSTALLATION CONFIGURATIONS.

#### **BENEFITS**

IT IS DESIGNED FOR USE IN BOTH STATIC AND MOBILE APPLICATION, TYPICALLY AS ENGINE MOUNTS, MARINE MOUNTS, COMPRESSOR MOUNTS AND GENSET MOUNTS. SOME MACHINE FEET OFFER DIFFERENT STIFFNESS CHARACTERISTICS IN THE THREE MAIN DIRECTIONS OF LOADING, THUS ALLOWING HIGH FLEXIBILITY TO ENSURE GOOD VIBRATION ISOLATION BUT MINIMISING MOVEMENT IN OTHER PLANES.



**MVL95131**



**MVL95132**



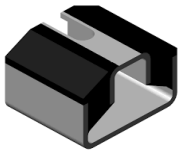
## U SHEAR MOUNT

MOVIL MANUFACTURE A RANGE OF U SHEAR MOUNTS WHICH CAN BE USED FOR LIGHT APPLICATIONS REQUIRING RELATIVELY HIGH MOVEMENT, FOR EXAMPLE FOR THE PROTECTION OF ELECTRONIC EQUIPMENT OR IN TRANSIT CASE PRODUCTION. DIFFERENT DESIGNS (U & HOLE TYPE) ARE AVAILABLE

PLEASE REFER TO THE DATASHEETS FOR DETAILED INFORMATION. ALTERNATIVELY IF YOU REQUIRE DESIGN AND DEVELOPMENT OF A SPECIFIC DEVICE MOUNT, THEN PLEASE CONTACT MOVIL TODAY.

### BENEFITS

DUE TO THEIR DESIGN, U SHEAR MOUNTS CAN BE LOADED IN ANY OF THE THREE PLANES. HOWEVER, THEY ARE GENERALLY LOADED VERTICALLY SUCH THAT THE RUBBER IS LOADED IN SHEAR ALLOWING FOR RELATIVELY HIGH DEFLECTIONS. APPLICATION EXAMPLES INCLUDE THE ISOLATION OF PUMPS AND GANS ON STATIONARY EQUIPMENT.



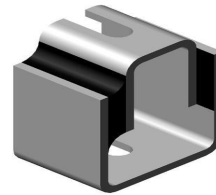
**MVL95211**



**MVL95212**



**MVL95213**



**MVL95214**

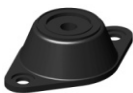
## COMBI MOUNT

COMBI MOUNT IS A METHOD OF AVOIDING UNWANTED VIBRATION AND NOISE. VIBRATION ISOLATION CAN BE ACHIEVED THROUGH THE USE OF ISOLATION MOUNTS. MOVIL'S RANGE OF COMBI MOUNTS IS AVAILABLE IN DIFFERENT SIZES AND RUBBER HARDNESS' TO SUIT EACH APPLICATION, MANY OF WHICH ARE HELD IN STOCK.

IF YOU CANNOT FIND THE VIBRATION ISOLATION PART YOU REQUIRED, WE CAN UTILISE OUR IN HOUSE DESIGN AND DEVELOPMENT PROCESSES TO PROVIDE A BESPOKE SOLUTION.

### BENEFITS

COMBI MOUNT ARE USED TO REDUCE VIBRATION TRANSMISSION FOR STATIC APPLICATION AND, DUE TO THEIR DESIGN, ALLOW RELATIVELY HIGH STATIC DEFLECTIONS ENABLING ISOLATION AGAINST LOW DISTURBING FREQUENCIES. EXAMPLE APPLICATIONS WHERE VIBRATION ISOLATORS ARE USED ARE FANS, HEATING AND VENTILATION EQUIPMENT AND AIR-CONDITIONING UNITS.



**MVL95411**



**MVL95412**



**MVL95413**

## ENGINE MOUNT

ENGINE MOUNTS HAVE TWO PURPOSES. FIRSTLY TO SECURE AN ENGINE AND GEARBOX INTO MACHINERY; AND SECONDLY TO ABSORB ANY SHOCKS AND VIBRATIONS IN OPERATION THAT COULD DO DAMAGE TO THE ENGINE. ENGINE MOUNTS ARE MADE FROM HIGH QUALITY RUBBER AND STEEL.

ENGINE MOUNTINGS THAT ARE PAST THEIR PRIME CAN LEAD TO ISSUES SUCH AS MECHANICAL DAMAGE DUE TO ENGINE MOVEMENT AND VIBRATION. IT IS THEREFORE IMPORTANT TO ENSURE THAT YOU REGULARLY CHECK AND REPLACE THEM.

FROM OEM AUTOMOTIVE MANUFACTURERS AND MARINE EQUIPMENT TO FIXED INSTALLATIONS AND PORTABLE EQUIPMENT, OUR ENGINE MOUNTS DELIVER PERFORMANCE AND PROTECTION YOU CAN RELY ON.



**MVL951011  
&  
MVL951014**

## PAVERS, TROLLEY & MILLING MACHINE TYRES

**MOVIL RUBTECH INDIA LLP.** IS ONE OF THE MARKET LEADER IN SOLID TYRES IN INDIA. **MOVIL RUBTECH INDIA LLP.** OFFERS WIDE RANGE OF SOLID TYRES THAT MEET THE DIVERSIFIED REQUIREMENT OF CONSTRUCTION EQUIPMENT & MATERIAL HANDLING INDUSTRIES.

**MOVIL** TYRES ARE MANUFACTURED AS PER LATEST CONSTRUCTION GUIDE LINE. OUR SPECIAL DESIGN PATTERN WILL MATCH TO BETTER PERFORMANCE FOR ALL EQUIPMENT WHERE IT FITS IT.

**MOVIL** TYRES ARE MADE OUT OF NATURAL RUBBER COMPOUNDS WHICH GIVE HIGH QUALITY PERFORMANCE & MOULDED RUBBER TYRE.

### PAVER TYRE

PAVER TYRE MANUFACTURED BY US WHICH IS USED FOR ROAD CONSTRUCTION EQUIPMENTS LIKE PAVER FINISHERS AND CURB PAVERS. THESE PRODUCTS CAN BE USED FOR ALL MODELS LIKE SENSOR PAVERS, SEMI SENSOR AND MECHANICAL PAVERS. WE WERE ONE OF THE BEST MANUFACTURER OF HUB TYPE PAVER SOLID TYRES.

SIZE	LOAD INDEX (IN KG)	THREAD DESIGN	SECTION WIDTH (INCH)	OD (INCH)
22 X 16 X 6	2300	U/D TYPE LUG PATTERN	6	22
22 X 16 X 7	2320	U TYPE LUG PATTERN	7	22
22 X 16 X 8	2420	U TYPE LUG PATTERN	8	22
22 X 16 X 12	3200	U TYPE LUG PATTERN	12	22



## MILLING MACHINE TYRE

MOVIL OFFERS VARIABLE VERSIONS IN MOULDING TYPE MEET EVERY SINGLE APPLICATION REQUIREMENT.

### FEATURES

- ▶ WEAR RESISTANT TRAD COMPOUND FOR EXTENDED LIFE
- ▶ WIDER TREAD PROFILE FOR REDUCED WORK LOAD
- ▶ LOW ROLLING RESISTANCE DESIGN FOR HIGHER ENERGY EFFICIENCY
- ▶ SUPERIOR BONDING TECHNOLOGY FOR TROUBLE FREE RUNNING
- ▶ WIDER RANGE COVERING ALL POPULAR SIZES
- ▶ TREAD IN SMOOTH & LUG PATTERNS
- ▶ CUSTOMISED COMPUNDS AVAILABLE ON REQUEST



### KEY APPLICATION

- ▶ CUTTER WHEEL MILLING MACHINE

SIZE	LOAD INDEX (IN KG)	THREAD DESIGN	SECTION WIDTH (MM)	OD (MM)
620 X 475 X 230	4800	P TYPE LUG PATTERN	230	620
620 X 475 X 250	5200	P TYPE LUG PATTERN	250	620
640 X 479 X 280	6200	P TYPE LUG PATTERN	280	640

## TROLLEY TYRE

### FEATURES

- ▶ SIZE RANGE COVERING ALL POPULAR SIZES IN SOLID
- ▶ TWO-STAGE & THREE-STAGE CONSTRUCTION IN SOLIDS
- ▶ APPLICATIONS INCLUDE BAGGAGE & PALLET TROLLEY, CONTAINER/PALLET DOLLY



SIZE	LOAD INDEX (IN KG)	THREAD DESIGN	SECTION WIDTH (INCH)	OD (INCH)
12 X 8 X 2	700	P TYPE LUG PATTERN	2	12
12 X 8 X 3	800	P TYPE LUG PATTERN	3	12
16 X 11 X 4	1120	U TYPE LUG PATTERN	4	16
18 X 12 X 5	2400	Y TYPE LUG PATTERN	5	18
18 X 12 X 6	2300	Y TYPE LUG PATTERN	6	18
27 X 21 X 5	3000	U TYPE LUG PATTERN	5	27
27 X 21 X 8	3600	U TYPE LUG PATTERN	8	27

## INFRASTRUCTURE / TESTING FACILITIES

**MOVIL RUBTECH INDIA LLP.** IS LOCATED AT THE HUB OF INDUSTRIAL AREA OF VATVA AHMEDABAD (GUJARAT). THE COMPANY HAS AN EXCELLENT RESOURCE BASE WITH GOOD INFRASTRUCTURE & CONNECTIVITY.

WE HAVE HIGHLY SKILLED AND QUALIFIED PRODUCTION, MARKETING AND QUALITY PERSONNEL.

### **MANUFACTURING FACILITIES**

- ▶ TRANSFER MOLDING MACHINES
- ▶ COMPRESSION MOLDING MACHINES
- ▶ MIXING MILL

### **IN-HOUSE FACILITIES**

- ▶ LATHE MACHINE
- ▶ WELDING MACHINE
- ▶ PAINTING BOOTH

### **TESTING ARRANGEMENT**

HARDNESS, SPECIFIC GRAVITY, TENSILE STRENGTH, ELONGATION %, COMPRESSION SET, LOAD TESTER

### **MOVIL RUBTECH INDIA LLP.**

**OFFICE:** 218/9, NEW VASAHAAT, OPP. MAHALAXMI INDUSTRIAL ESTATE, NR. BOMBAY CONDUCTOR, VATVA GIDC ROAD. VATVA AHMEDABAD - 382445.

**PH: 079-25831548**

**UNIT ADDRESS:** 93/2 MAHALAKSHMI INDUSTRIAL ESTATE, NEAR BOMBAY CONDUCTOR, VATVA GIDC ROAD, VATVA AHMEDABAD - 382445

**MOB NO. +91 9824939599 / +91 9824909599**

**Emai: salesmovilrubtech.indiallp@gmail.com**